

Burlingame Redwood

# This House Fits

WHEN architect William Whifler set out to design a new house for his mother in Burlingame, his problems were ready made—a small lot on a steep bank located along a winding creek bed.

He came up with a graceful little (1,500 square feet) home framed in steel and adorned with glass and redwood that nestles like a jewel in the lot's dense natural growth.

The entire living room perimeter of the two-bedroom, one bath dwelling utilizes glass walls, going full length from floor to ceiling in some areas to take advantages of the view, such as the reflecting pool off one corner of the living room.

The most striking feature of the home is the high vaulted roof sheathed in copper that spears up between modern looking cantilever overhangs. The entire load is supported by six steel frames, welded in the shape of the letter W, that rest on cement block columns.

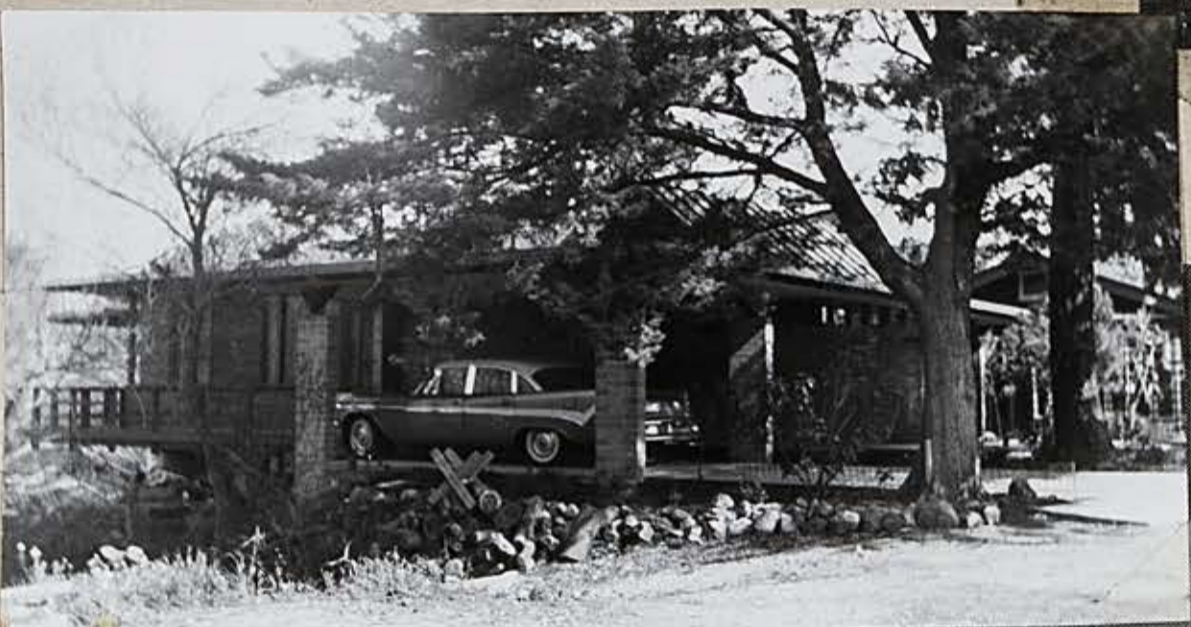
The house projects out over the steep creek bank, making it even more dramatic to see. The overall feeling is one of rugged delicacy.

Steel sliding patio doors, custom designed, open from the living and dining rooms onto a decked area surrounded on three sides by the house.

Altogether, the home is a unique repository for the possessions, new and old, of Whifler's mother. And it's a tasteful addition to a neighborhood that already contains old and new homes.



Use of steel frame allows gabled roof and protective overhang to reach far out over entryway with minimal obstructive support, even though it's studded with glass door, wall.



Striking interior of Whifler's home is personified in this view of living room. Note how inobtrusively the concrete block columns reach to meet the pointed steel frames, leaving a wide area for light-admitting glass. Raised hearth and floating lower ceiling accentuate airiness of interior.